

1963 Stock Underframe Equipment (1)
Class 421 DTC ,Driver's side
By Mark Brinton



Cab end



DTC Drivers side



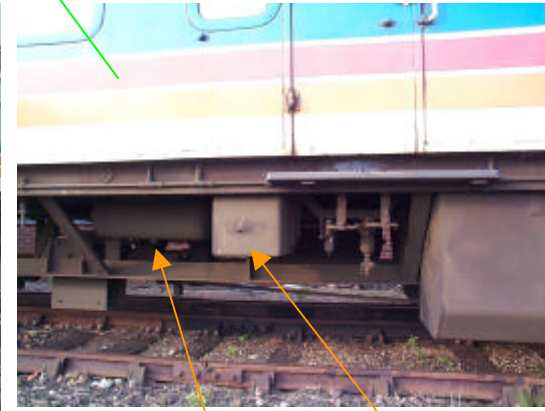
Brake air strainers & water tank



Buffer & coupling release lever
DSD Application Valve



Shoe fuse & AWS receiver



Aux. Reservoir and EP brake unit.

1963 Stock Underframe Equipment (2)
Class 421 DTC, Secondmans's side
By Mark Brinton



B5S Bogie with speedo generator



DTC Secondman's side



Cab Front



Water tank, Supplementary reservoir & AWS Receiver



Shoe fuse & B5S bogie with shoegear and guard irons

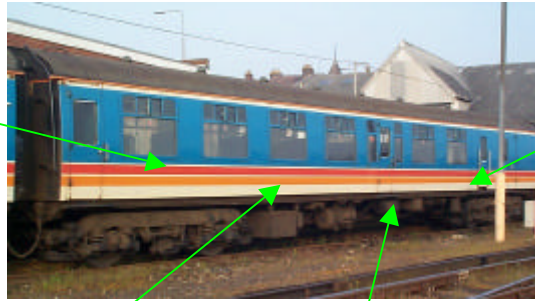


Buckeye coupler

1963 Stock Underframe Equipment (3)
Class 421/4 MBS Corridor side
By Mark Brinton



Mk.6 bogie & battery box



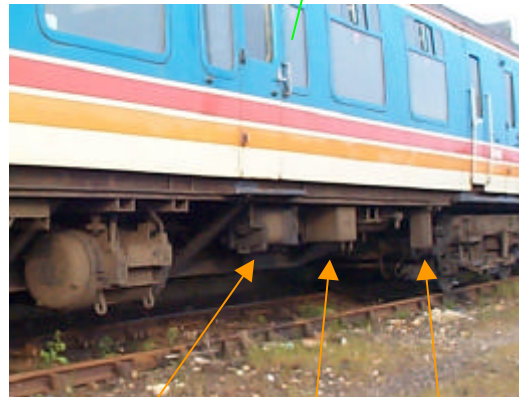
MBS Corridor side



Control air reservoir & Main Auxiliary fuse
(Phase 2 only)



Battery Box, fuse box, MG resistor, MG set

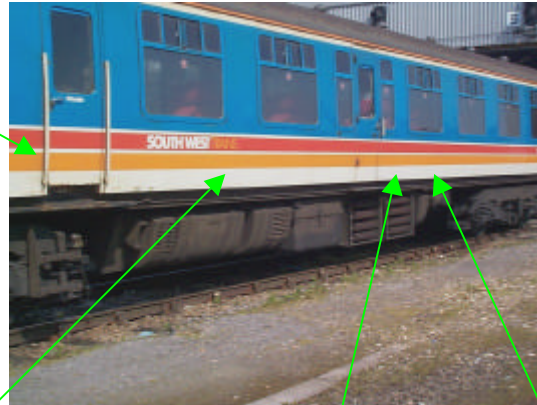


No1 Compressor, EP Brake Unit, Main Aux.
Fuses (Phase 2 only)

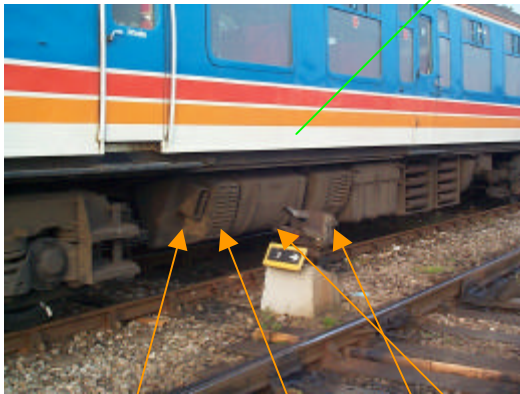
1963 Stock Underframe Equipment (4)
Class 421/4 MBS Non-corridor side
By Mark Brinton



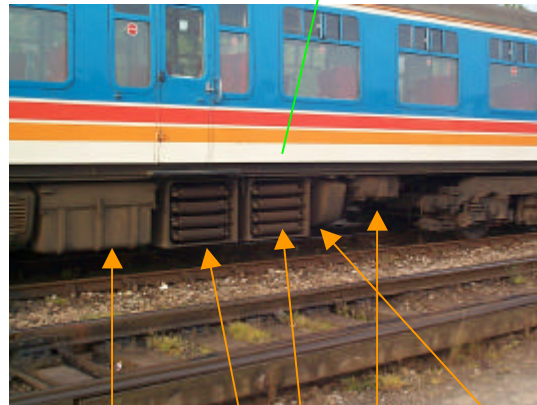
Mk.6 Bogie



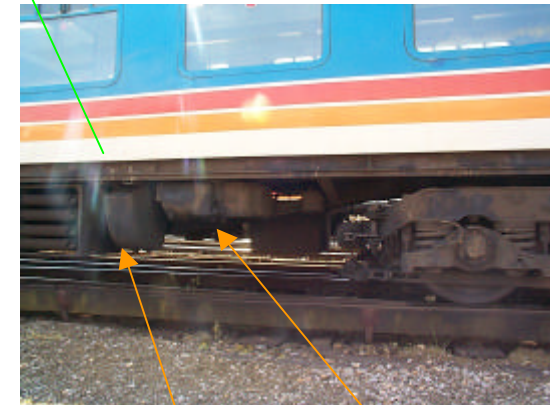
MBS Non-corridor side



Equipment link, Line breaker case, Main equipment case, RGS Case



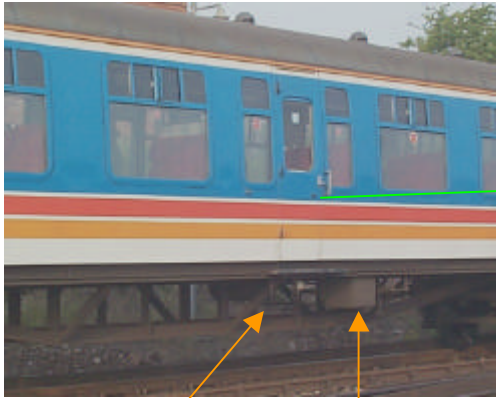
Camshaft case, No.1 & 2 Grid banks, No.2 Reverser & No.2 compressor



No.2 reverser and No.2 compressor

1963 Stock Trailer Coach Underframe Equipment & Greyhound Variations (5)

By Mark Brinton



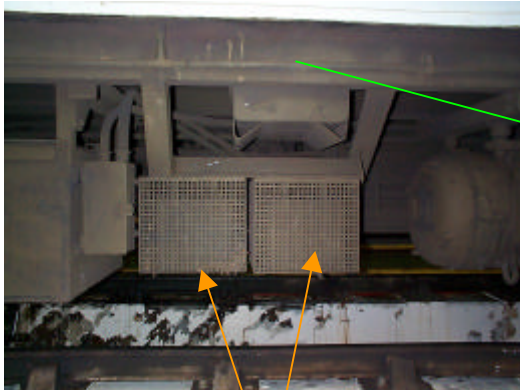
Aux. Reservoir & EP Brake unit
(other side in top photo)



Trailer Coach



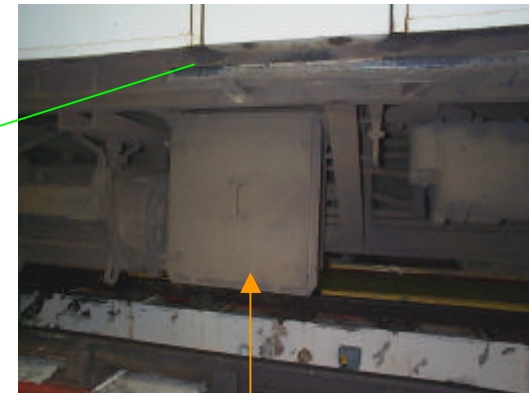
B5S trailer bogie



Inductive shunts



MBS (Corridor side)



Field Divert Equipment Case

Class 421/8 Trailer Underframe Equipment (6)

By Mark Brinton



Jumpers connecting to DTC (left)
(control side)



TSL (Ex. Class 411) re-bogied



B5S trailer bogie
(ex. CI.422 buffet)



Jumpers connecting to DTC (right)
(power side)



Aux. Reservoir & EP brake unit



Look no brake rigging!
(compare with CI.411/5 TS)