

“The Devon Belle”



Photo]

[M. W. Earley

The down “Devon Belle” near Winchfield on June 22, hauled by “Merchant Navy” class 4-6-2 No. 21C14 “Nederland Line”

THE “Devon Belle” train, which began running on June 20th last on the Southern Railway West of England route, is made up of Pullman cars which have been reconditioned for the service.

The “Devon Belle” leaves Waterloo at noon on Fridays to Mondays inclusive; the first advertised stop is Sidmouth Junction, though a special stop is made at Wilton to change engines. The question of obviating the stop at Wilton by providing larger tenders is being considered. At Exeter the train is divided, one portion proceeding to Plymouth and the other to Ilfracombe. In the down direction the “Devon Belle” is scheduled to reach Ilfracombe in 5 hr. 32 min. from Waterloo, and Plymouth Friary in 5 hr. 36 min.; the up timings are 5 hr. 20 min. from Ilfracombe, and 5 hr. 50 min. from Plymouth Friary.

A Pullman observation car is provided at the rear of each train, between Waterloo, Exeter, and Ilfracombe; the car is available to first and third class passengers.

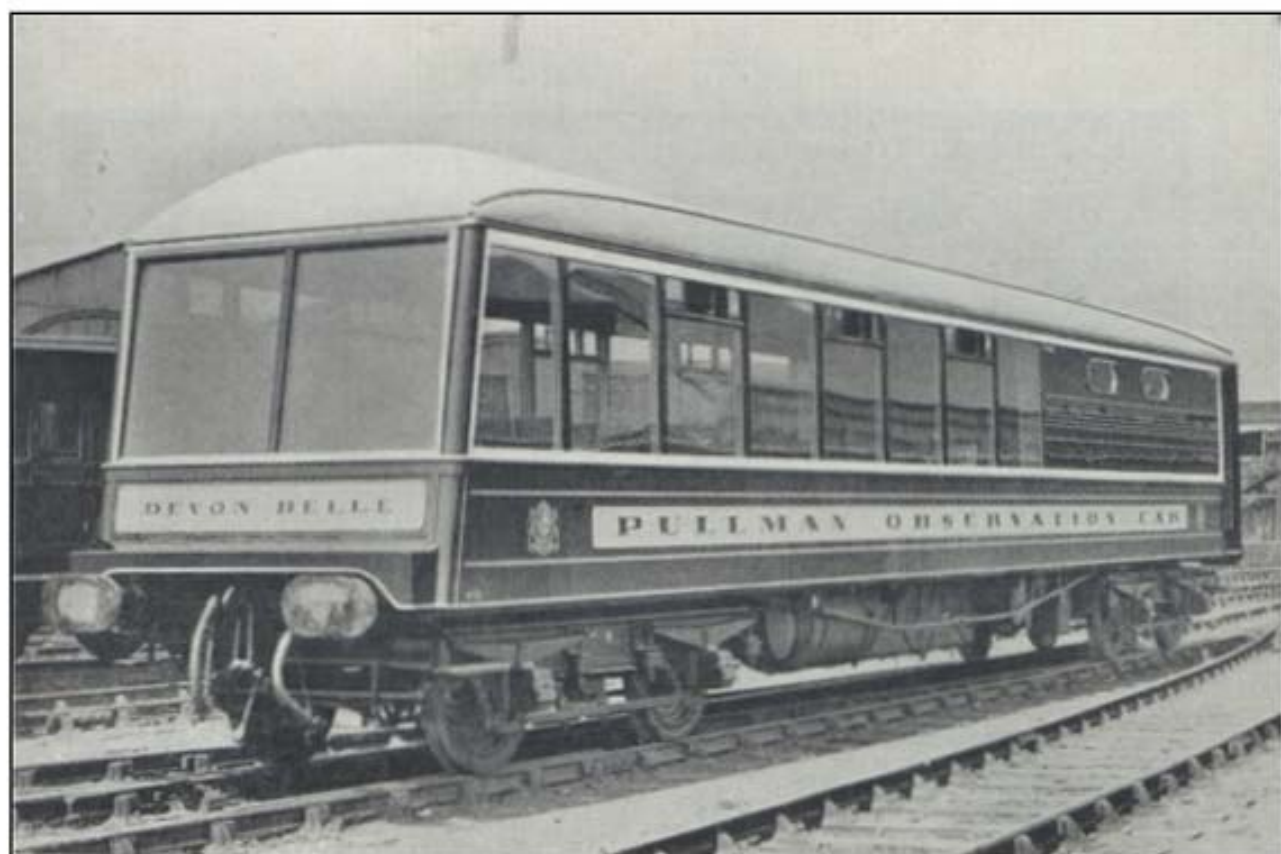
The observation cars were converted from two existing Pullman cars by the

Pullman Car Company at its Preston Park Works; they have steel underframes and wooden bodies, length of the bodies is 59 ft. and the centres of bogies 41 ft. The weight of each car is 33 tons.

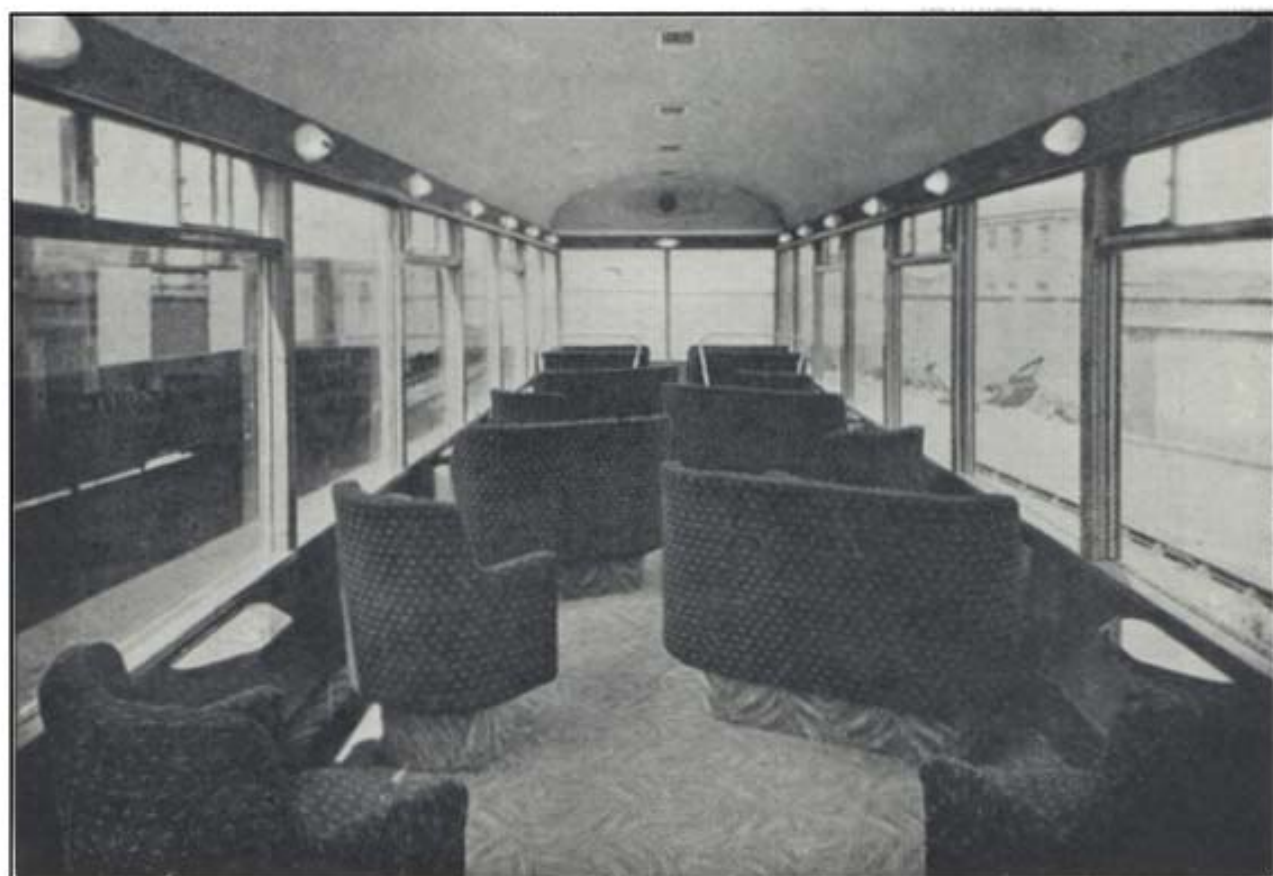
The car comprises a bar, pantry, and lavatory, and an observation saloon which has seating for 27 in single and double tub seats.

The interior is finished throughout with Waverite plastics, and cellulose sprayed wood and metal mouldings. The saloon ceiling is sprayed broken white colour; walls, skirtings, and mouldings are in tones of dove grey; steam pipe covers are finished in copper bronze. The seating upholstery is in blue white-flecked and red white-flecked material; the carpet is grey brown and white streaked. At the closed end of the car is a curved recess fitted with wall seats, which are surmounted with a mural map of the route to Devon. This map is a design by Miss Eleanor Esmonde-White.

The exterior of the car is painted in the standard Pullman umber and cream colours in new design and gold lining. The designs and lettering are by Mr. R. Levin, who also designed the Trianon Bar on the “Golden Arrow” train.



One of the "Devon Belle" Pullman observation cars



Interior view of the observation end of the car